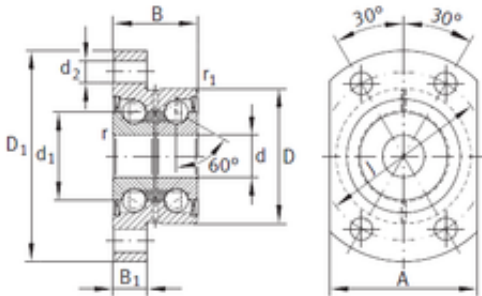




Jinan Shenglei Bearing Co., Ltd.

15 mm x 42 mm x 25 mm INA ZKLFA1563-2RS Angular contact ball bearing



Bearing No. ZKLFA1563-2RS

ZKLFA1563-2RS Bearing 2D drawings and 3D CAD models

Size	15x42x25 mm
Bore Diameter	15 mm
Outer Diameter	42 mm
Width	25 mm
d	15 mm
D	42 mm
B	25 mm
C	25 mm
Screw	M6
Angle (?)	60 °
d1	28 mm
d2	6,8 mm
r min.	0,3 mm
r1 min.	0,6 mm
A	45 mm
B2	10 mm
D1	63 mm
J	53 mm
da min.	20 mm
da max	34 mm
Weight	0,31 Kg
Dynamic load rating axial (C)	17,9 kN
Static load rating axial (C0)	28 kN